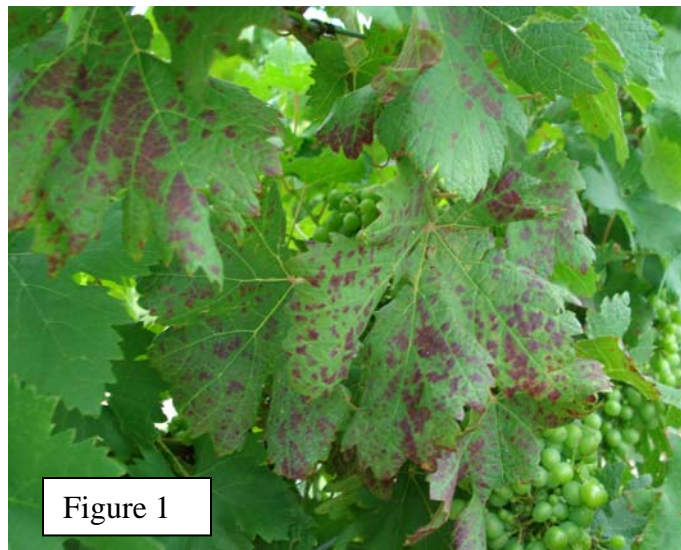


North Texas Grape Growers:

So far this year, your grapevines most likely have had snow at Easter, a cool and cloudy spring, some hail and LOTS of rain. Black Rot is giving everyone a run for the money. Most of the vineyards I have visited have increased their fungicide spray applications 2 fold in order to manage the influx of Black Rot. You should have already applied your last dithane application for this season. As Black Rot fades to the background, Powdery Mildew and Downy Mildew move to the forefront for possible fungal infestation of your grapes. Pristine has the best protective activity, using 2 modes of action both forwards and backwards, but limit applications to two sprays per season. Abound is labeled for Downy Mildew, Phomopsis, Powdery Mildew, and Black Rot and it suppresses Bunch Rot. Nova has great kickback activity, but is labeled only for Powdery Mildew, Black Rot and Anthracnose. Pristine, Nova, and Abound have a 14 day PHI.

The vines are responding to the abundant rain with rapid, steady growth. In many cases, this growth outpaces the transport of nutrients resulting in red splotches on older leaves. (Figure 1) & (Figure 2)





A veraison petiole analysis will notify you of an existing deficiency in magnesium and/or potassium. This one-season phenomenon should not cause long term damage to your vines or berries. To take your petiole sample nutrient analysis, choose the most recently matured leaf from 30 vines, 2 leaves per vine (total of 60 petioles).

Other basal leaves are turning red in a way that makes one question whether Pierce's Disease is present. There is no way to know for certain without testing the petioles for Pierce's Disease. The link for the Texas Plant Disease Diagnostic Lab (tpddl) is:

<http://plantpathology.tamu.edu/extension/tpddl/tpddl.asp>



Figure 3

The occurrence of red leaves as seen in Figure 3 could be the vine's reaction to the stress of a late cold fronts, excessive rain, increased fungicide applications, and vine maturation or it could be PD. HOWEVER!! If you have a vine in question, please test your vines to confirm yay or nay.

At this time of high vigor, it is important to keep in mind that buds on the spurs need exposure to light for next year's crop. Leaf pulling from the eastern exposure will open your canopy to both sunlight (cloudy light?) and fungicide exposure.

I hope this notice finds you all out of flood range and well. Please call or email me for any comments, questions, or suggestions.

Sincerely,

Fran Pontasch
Viticulture Advisor, North Texas

Office: (254) 968-4144
Mobile: (254) 977-3641
Email: fmPontasch@ag.tamu.edu

TAMU Agriculture Research & Experiment Center
1229 US Hwy 281 North
Stephenville, TX 76401