



TEXAS Tempranillo

Tasting Session- TWGGA Conference 2019

Moderator- Penny S. Adams

Will TEXAS Tempranillo be Sustainable?

Outline

- Introduction of Panelist
- Texas 2017 Tempranillo Stats-USDA –NASS
- Sustainability of Tempranillo in Texas- *Quirks in the Vineyard & Cellar?*
- Tempranillo Characteristics: *My Experiences*
- Panelist discuss Experiences with Tempranillo *in the Vineyard & Cellar*
- Q & A ?

Tempranillo Wines & Panelist Today

- **North TX Fruit:** 2016 Blue Ostrich Winery Estate Tempranillo
Patrick Whitehead- Grower & Winemaker
- **Central TX Fruit:** 2016 Brennan Vineyards Tempranillo- Newberg Vineyard
Todd Webster- Grower & Winemaker
- **TX Hill Country Fruit:** 2016 Pedernales Cellars Tempranillo
Kuhlken, Speir & Parr Vineyards- Growers
David Kuhlken- Winemaker
- **TX High Plains Fruit:** 2015 Bending Branch Winery Tempranillo
Neal Newsom- Grower
Bob Young- Winemaker

Tempranillo Texas Totals 2017-USDA-NASS

- 360 Bearing Acres
- 84 Non-Bearing Acres
- 981 Tons Production
- 2.7 Tons/Acre Yield
- Value of Production: \$1,697,130
- Average Price per Ton: \$1730

Sustainability in Texas?

Will Tempranillo be around in 40 years?

Highest Potential Varieties:

- Budbreak late for reduced risk of late spring frost
- Tolerant of extreme Texas weather conditions-Heat/Cold & Drought
- Relatively tolerant of disease issues at given site
- Require low inputs per returns

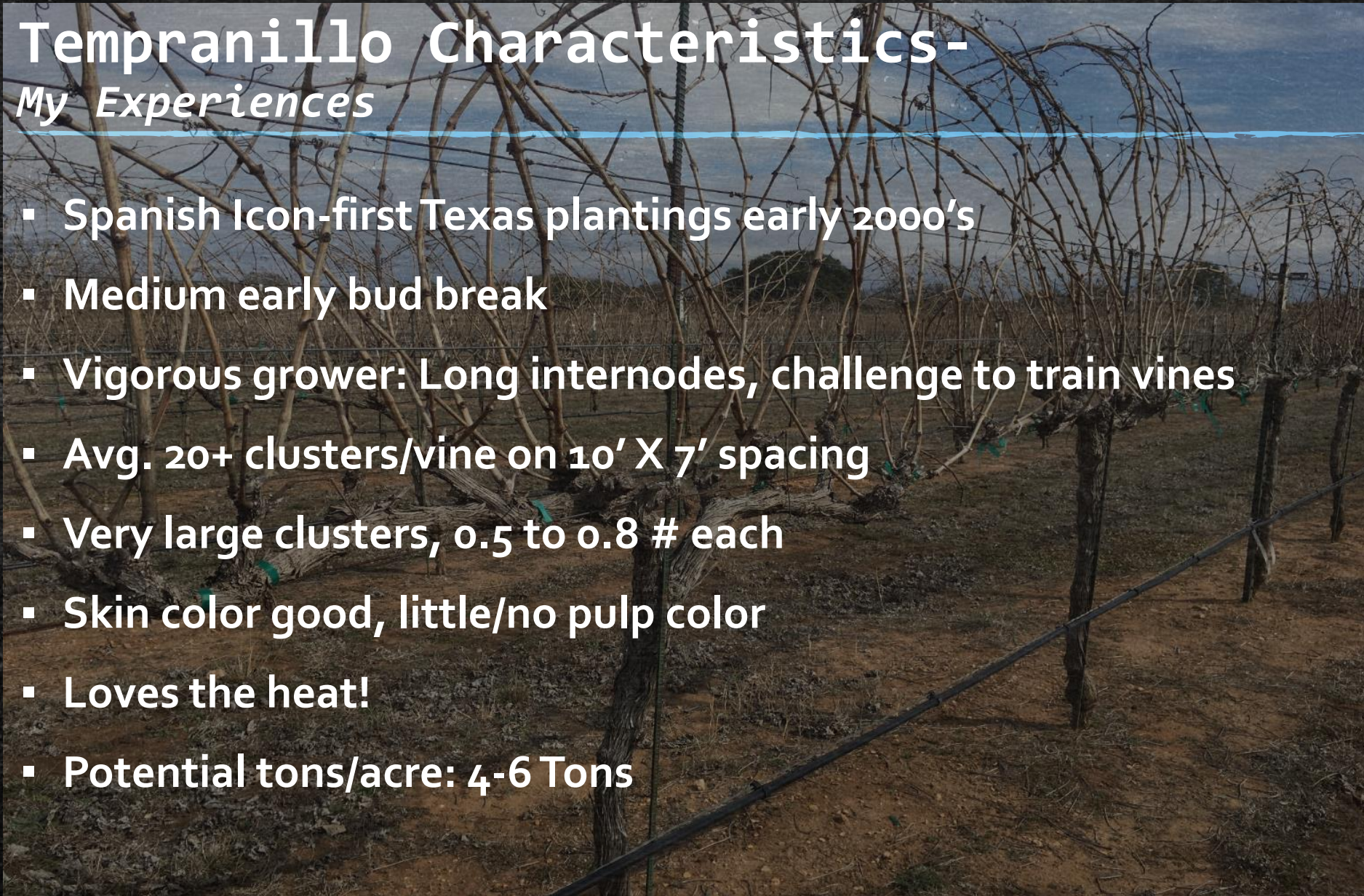
Can Tempranillo:

- Produce consistent yields?
- Produce consistent high quality ?
- Command high market interest & returns?

Tempranillo Characteristics-

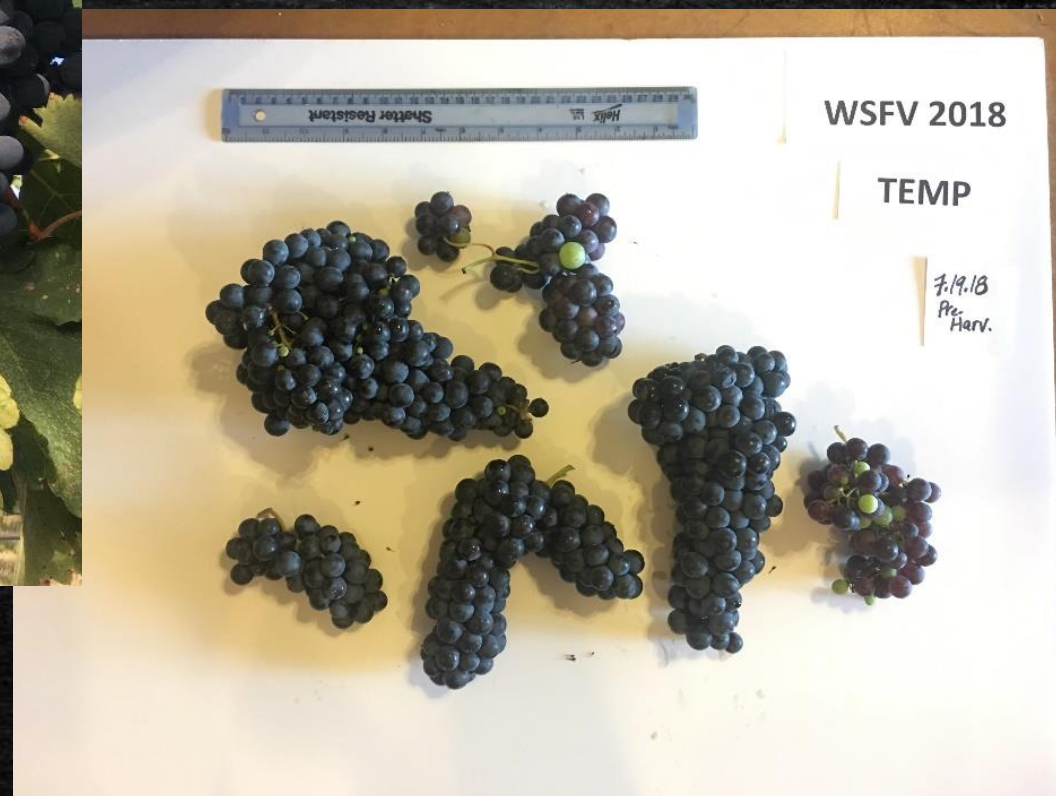
My Experiences

- Spanish Icon-first Texas plantings early 2000's
- Medium early bud break
- Vigorous grower: Long internodes, challenge to train vines
- Avg. 20+ clusters/vine on 10' X 7' spacing
- Very large clusters, 0.5 to 0.8 # each
- Skin color good, little/no pulp color
- Loves the heat!
- Potential tons/acre: 4-6 Tons





TX Tempranillo



Tempranillo Sustainability?

Quirks In the Vineyard:

- Vigor- Training Issues? Increased Trellis Requirement?
- Late Spring Frost Risk? Winter Hardiness?
- Tolerance to Herbicide Drift?
- Disease Susceptibility?
- Canopy Management Requirements?
- Longevity of Cordons & Spur Positions?
- Inputs Labor & Materials/ Acre & Returns?
- Ability to reach TRUE phenological ripeness?

Tempranillo Sustainability: *Quirks In the Cellar?*

- Ability to reach TRUE phenological ripeness?
- Chemistry issues?
- Extra processing needs?
- Ability to complete both primary & secondary fermentation?
- Stability issues? Color Stability?
- Aging requirements?
- Long-term aging potential?
- Cost of Goods vs. Returns?

Tempranillo in Texas- Today's Tasting Session

Bending Branch Winery
Newsom Vineyard
Yoakum County, TX

Pedernales Cellars
Kuhlken, Speir Vineyard
Gillespie County, TX



Blue Ostrich Vineyard & Winery
Estate Vineyard
Cooke County, TX

Brennan Vineyards
Newberg Vineyard
Comanche County, TX

Blue Ostrich Vineyard- North TX

2016 Blue Ostrich Tempranillo

Grower- Patrick Whitehead



Blue Ostrich Vineyard & Winery: **NORTH TX**

2016 Tempranillo- Estate Vineyard

- **Location:** Red River Valley, NW Cooke Co. near St. Jo, TX
- **Elevation:** 850'
- **Year Planted:** 2011 & 2012
- **Acreage Tempranillo:** 4 acres @ 6' x 9' spacing (807 vines/acre)
- **Soil Type:** Duffau/Windthorst Series, red sandy clay loam, weathered from sandstone
- **Soil Depth:** Deep with bedrock @ >60"
- **Other Site Characteristics:** On west facing slope with N/S row orientation, on hillside and is susceptible to high winds, VSP System

Blue Ostrich Vineyard/Winery:NORTH TX

2016 Tempranillo- Estate Vineyard

Winemaker-
Patrick Whitehead





Estate-Kuhlken Vineyard- TX HILL COUNTRY

2016 Pedernales Cellars Tempranillo

Kuhlken Vineyard



Pedernales Cellars: TX HILL COUNTRY

2016 Tempranillo Texas Hill Country

- **Location:** Kuhlken Vineyard, Gillespie Co., w/ blend of Parr Vineyard, Mason Co. and Speier Vineyard, Gillespie Co.
- **Elevation:** 1,600' (Kuhlken & Speier) & 3440 Ft. (Parr)
- **Year Planted:** 2007
- **Clone/Rootstock:** 2/5BB & SO₄
- **Soil Type:** Sandy loam over caliche
- **Soil Depth:** 18" to 4'
- **Soil Texture:** Medium grain with small amount of granite & sandstone
- **Other Site Characteristics:** Hillsides, mineral rich

Pedernales Cellars: TX HILL COUNTRY

2016 Tempranillo- Kuhlken, Speir & Parr Vineyards

Winemaker-
David Kuhlken





Newberg Vineyard- Central TX

2016 Brennen Vineyards Tempranillo



Tempranillo

Newberg Vineyard: CENTRAL TX

2016 Brennan Vineyards Tempranillo

- **Location:** Comanche Co., 10 mi. south of Comanche, TX
- **Elevation:** ~1,400'
- **Year Planted:** 2009
- **Acreage Tempranillo:** 2.5 Acres, @ 10' X 5' spacing (871 vines/acre)
- **Soil Type:** Loamy, moderately well-drained
- **Soil Depth:** 4'+ with no restriction
- **Other Site Characteristics:** Alluvial deposits on stream terrace of South Leon

Brennan Vineyards: CENTRAL Texas

2016 Tempranillo-Newberg Vineyard

Winemaker-
Todd Webster





Newsom Vineyards- TX High Plains

2015 Bending Branch Winery Tempranillo

Grower:
Neal Newsom



Newsom Vineyards: TX High Plains

Bending Branch Winery 2015 Tempranillo

- **Location:** Yoakum Co, North of Plains, TX
- **Elevation:** 3,700 Ft.
- **First Planted:** 2001
- **Acreage Tempranillo:** 20+ @ 11' x 4' spacing (994 vines/acre)
- **Soil Type:** Tokio Aravana Fine sand over fracture caliche 6"-24"
- **Soil Depth:** Shallow rocky low vigor soils
- **Other Site Characteristics:** Underground irrigation, two-wire vertical trellis trained to bi-lateral cordon.

Bending Branch Winery: TX High Plains

2015 Tempranillo Newsom Vineyards

Winemaker-
Bob Young



Q & A?

Texas Tempranillo



A close-up photograph of a bunch of dark, ripe grapes hanging from a vine. The grapes are surrounded by green leaves. The entire image is framed by a thick black border. Overlaid on the image are vibrant, multi-colored outlines (yellow, green, blue, red) that trace the edges of the leaves and the individual grapes, giving it a stylized, almost digital or artistic appearance.

THANK YOU!